

**Grand Circle Island & Haleiwa**

(9 Hours: 7:00AM – 4:00PM)



**SUGGESTED RETAIL PRICE**

Adult: \$109.00    Child: \$74.00

**DESCRIPTION**

Experience Oahu, plus explore Haleiwa town all in one day on this 9-hour Grand Circle Island Tour! Visit beautiful scenic spots and hard to get to places in the comfort of a Deluxe Bus. The tour covers all the beautiful scenic spots, including Diamond Head and the Kahala Gold Coast to marine sanctuary Hanauma Bay, natural wonder Halona Blow Hole, lush rainforest Nuuanu Pali, Byodo-In Temple, Tropical Farm, Dole Plantation and world-famous North Shore surfing beaches. Plus, you'll have enough time (lunch on your own) to explore Haleiwa town (TWO CHOICES: 90 minutes in Haleiwa OR 40 minutes in Haleiwa with Waialua Coffee / Soap Factory). Experience the difference of unparalleled comfort aboard our Deluxe Bus Tour with [onboard restroom](#) and [original video](#), [mint & hand towelette service](#), [walking map](#) and more. Plus, our exceptional Driver Guide with Aloha makes your tour a memorable experience! Also, enjoy a breakfast of poi malasada from local favorite Kamehameha Bakery.

**INCLUDES**

- More Scenic Spots and Drive: Diamond Head, Kahala Coast, Hanauma Bay, Halona Blow Hole and Nuuanu Pali (parking fee included).
- Hard-to-Get-to Places: World-famous North Shore beaches and rare 90 minutes to enjoy surfing country town of Haleiwa.
- Historical Sites: From Byodo-In Temple (admission included) and Dole Plantation to Downtown Honolulu.
- Tropical Farms: Sampling of Hawaiian coffee and macadamia nuts.
- Unparalleled Comfort aboard our Deluxe Bus Tour: Our deluxe bus is equipped with [onboard restroom](#) and [original video](#), [mint & hand towelette service](#), [walking map](#) and deluxe features like no other.
- Our Exceptional Driver Guide: Are trained to the highest standard (see our testimonials on TripAdvisor). They will give you in-depth narration and assist you at each stop to ensure your tour is a memorable experience filled with Aloha!
- Breakfast: Poi Malasada from local favorite Kamehameha Bakery and a bottle of ice-cold Hawaiian water.

**SCHEDULE / ROUTE**

6:55AM	Pick-up in Waikiki
7:20AM	Diamond Head (window view), Hanauma Bay (10 minutes; closed on Tuesday), Halona Blow Hole (5 minutes), Nuuanu Pali (10 minutes), Byodo-In Temple (20 minutes), Tropical Farms (20 minutes for Hawaiian food tasting) and North Shore Beaches (window view)
11:45AM	Two Choices to enjoy Haleiwa: A) 90 minutes at Haleiwa for lunch and shopping OR B) 40 minutes at Haleiwa, plus 20 minutes at Waialua Coffee / Soap Factory
1:35PM	Dole Plantation (30 minutes) and try the delicious Dole Whip (own)
2:20PM	Depart for Waikiki, Downtown Honolulu (window view)
4:00PM	Return to Waikiki



Note: Schedule route subject to change. ★ = Stop    ◻ = Window View

**GENERAL INFORMATION**

Price: Is per person and includes tax, gratuity and fee. Children are ages 3 – 11. Age 2 and under are free. Prices, contents, route and schedule subject to change. Additional usage fee applies for some hotels.

Vehicle: Deluxe Bus with [onboard restroom](#) and [original video](#), [mint & hand towelette service](#) and more!

Tour Time: 7:00AM – 4:00PM. Closed on New Year's Day (1/1), Thanksgiving Day (11/25), Pearl Harbor Remembrance Day (12/7), Honolulu Marathon (12/12) and Christmas Day (12/25).

Attire: Please dress casually and wear comfortable shoes for light walking. We also recommend you bring sunglasses and a camera.

Reservations & Cancellation Policy: For reservations and information, call toll free at 1-800-334-6191, 808-983-STAR (7827) in Hawaii or visit our website at [StarofHonolulu.com](#). You may also fax to 808-983-7780 or email [info@starofhonolulu.com](mailto:info@starofhonolulu.com). Cancellations made less than 24 hours in advance and no shows will be charged the full amount. For parties of 10 or more, please inquire for group policy.



6:55AM Pick-up in Waikiki  
 7:20AM Diamond Head, Kahala, Hanauma Bay and Halona Blow Hole, Nuuanu Pali, Byodo-In, Tropical Farms, North Shore Beaches  
 11:45AM Haleiwa – Two choices  
 1:35PM Dole Plantation  
 4:00PM Return to Waikiki

# DAILY DELUXE-BUS TOUR

## Grand Circle Island & Haleiwa

(9 Hours: 7:00AM – 4:00PM)

Poi Malasada Breakfast from local favorite Kamehameha Bakery with bottled water. Byodo-In Temple admission included.

2021 RST3'

### Cover More of Oahu All in One Day!

Unparalleled comfort aboard our Deluxe Bus Tour with [onboard restroom and original video](#), [mint & hand towelette service](#), our exceptional Royal Star® driver guide and more.



Deluxe Bus



Mint and Hand Towelette Service



Onboard Restroom



Onboard Video and In-Depth Driver Narration



Breakfast from Kamehameha Bakery



Hanauma Bay (10 minutes)



Halona Blow Hole (5 minutes)



Nuuanu Pali (10 minutes)



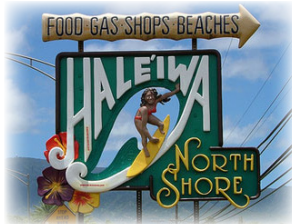
Byodo-In Temple (20 minutes)



Tropical Farms (20 minutes)



North Shore Beach (window view)



(A) Haleiwa (90 minutes)



(B) Haleiwa (40 minutes), plus Waialua Coffee / Soap Factory (20 minutes)



Dole Plantation (30 minutes)



Downtown Honolulu (window view)

### Additional Notes

Attire: Please dress casually and wear comfortable shoes for light walking. We also recommend you bring sunglasses and a camera.

Hanauma Bay: Closed on Tuesdays.

Time at Haleiwa: Enough time to enjoy lunch on your own. Ask our driver for recommendations on world famous shrimp wagon, burgers and shave ice places!

Price and Contents subject to change. We ask for your understanding in schedule / route changes as there may be factors beyond our control (i.e. traffic, etc.).

### Pick-Up Schedule for Waikiki

ALA MOANA Mahukona Street	6:40	HYATT REGENCY Koa Avenue under green awning	7:15
AMBASSADOR Namahana Street	7:00	PRINCE WAIKIKI Main Entrance	6:45
HALE KOA Front Entrance	6:55	SEASIDE AVENUE Ross Dress for Less	7:10
HILTON HAWAIIAN VILLAGE Grand Islander Bus Depot	6:50	WAIKIKI BEACH MARRIOTT Paoakalani Avenue Bus Depot	7:20
HOKULANI WAIKIKI Lewers Street across PF Chang's	7:05		



ROYAL STAR HAWAII TRANS & TOURS® ★ (PUC 1505-C)  
 Toll Free 1-800-334-6191 ★ Phone 808-841-STAR (7827) ★ Fax 808-832-5574  
 RoyalStarHawaii.com ★ StarsofParadise.com



OAHU  
12.21.20