



Deluxe Gold MCI Motorcoach

Total Fleet of 25 — 8 with 60 Seats and 17 with 58 Seats (♿ = 6)



ROYAL STAR®
EXTRA MILES

Largest Custom Deluxe Motorcoach Fleet — Our Signature Fleet

- **Deluxe Gold Service:** Mint & hand towelette and [onboard restroom](#).
- **Safety is #1!** All vehicles are equipped with seat belts, MonitorCam, TPMS (Tire Pressure Monitoring System), ABS (Anti-Lock Braking System), ASC (Automatic Stability Control), MDSS (Dynamic Suspension System, including kneeling feature for easy access), Michelin ® tires (no retread tires).
- **Greener:** [Newest fleet with lower emissions!](#)
- **Digital Signage:** 48 hours notice, English only, maximum 32 of characters.
- Large Baggage Bay and ample overhead storage.
- Deluxe Passenger Comfort: Easy access with kneeling feature, air-conditioning, panoramic window views, reclining seats, adjustable headrest / footrest and more.
- Advanced Audio / DVD Video System: With hands-free microphone and flat screens.

ROYAL STAR® EXTRA MILES



- **Strategic Management GPS Control System:** From our On-Time Guarantee® to the highest level of safety.
- **Dispatch:** For smoother operations. [Complimentary](#) for charters with over 6 motorcoaches.
- **Digital Signage / Video Screens / Microphones:** 6 videoscreens and 1 microphone.
- **Deluxe Gold Service:** From onboard restroom to mint & hand towelette.

BAGGAGE



- **Baggage Charge and Capacity:** Charge is per person, one-way. Hand-carry bags are allowed. [Capacity is 90 baggages](#), though this will be reduced as each oversized items takes up 2 spaces. Please ask for details.
- **Oversized Items:** Ask for additional charges to baggage, such as golf bags, large band instruments, bicycles and surfboards.
- **School Performance Day:** Oversized band instruments are complimentary to and from the performance location.



- **Requirement:** Advance request required. See below. Each wheelchair guest must be accompanied by an assisting person. We regret that we cannot accommodate larger wheelchairs and scooters.
- **Wheelchair with Non-Ambulatory Guests** ♿ : Confirmation based on availability. [Per vehicle:](#) Maximum of 4 wheelchairs. Maximum size is 30" wide by 48" long, and the combined weight of the wheelchair and guest must be less than 500 lb. Each wheelchair takes 7 minutes to load. Capacity decreases by 6 seats per wheelchair.
- **Wheelchair with Ambulatory Guests:** 24 hours in advance notice. Wheelchairs less than 50 lb. and collapsible will be stored in the baggage bay. Release of Liability Form to be signed.



RoyalStarHawaii

TRANS & TOURS

DELUXE GOLD MCI

2026 RSC1'



Top-Rated
Reviews



Deluxe Gold Motorcoach Fleet – Operating the Largest, Newest and Cleanest Vehicles in Hawaii



Group Name Digital Signage



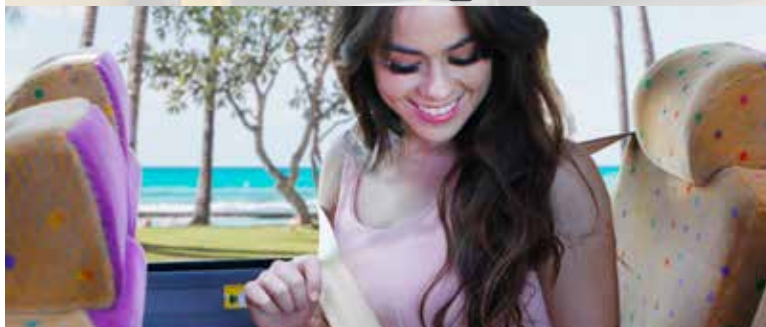
Big Baggage Bay



Lift Buses



Mint and Towelette Service



100% Seat Belted and MonitorCam-Equipped



Spacious Interior



Video Screen



Onboard Restroom



ROYAL STAR HAWAII TRANS & TOURS® ★ (PUC 1505-C)
Toll Free 1-800-334-6191 ★ Phone 808-841-STAR (7827) ★ Fax 808-832-5574
RoyalStarHawaii.com ★ StarsofParadise.com



OAHU
7.22.25